



# RTM-070 Magnetic Bearing Centrifugal Compressor

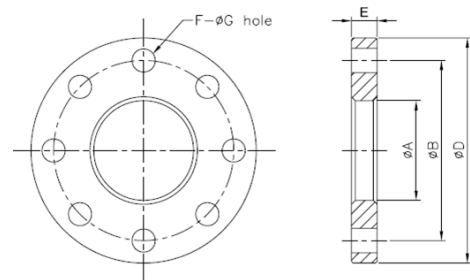
## Specifications



Model		RTM-070	
Refrigerant		R134a / 1234ez	
Nominal cooling capacity		USRT(TONS)	
		300~350	
Compressor	Type	Two-stage compression	
Axial Guide Vane Control	Inlet Guide Vanes	20~100% continuous	
	Voltage	220 VDC	
	Input Signal	4~20mA - DC: 1~5V - DC	
	Output Signal	4~20mA - DC	
Motor	Type	3 Phase, 2 Pole, Permanent magnet	
Motor	Starting	VFD	
	Voltage	V	460
	Insulation	Class H	
	Protection	PT100*9 - Motor Winding(5) - Magnetic Bearing (4)	
Transmission	Type	Direct-driven	
	Lubrication	Oil free	
Hydrostatic pressure test		PSI (kg/cm <sup>2</sup> g)	321 PSI (22 kg/cm <sup>2</sup> g)
Dimension (LxWxH) Compressor		FT/M	4.25' x 2.62' x 2.30 (1.3 x 0.8 x 0.7)
Weight (Compressor)		LB/kg	2314.85 lb (1050 kg)
Shipping Weight (Components) 1 skid		LB	

## Suction/discharge/economizer flange size

Position	Size	A	B	D	E	F	G	Piping Thickness	Bushing OD	
RTM-070	Suction	8"	8.70"	12.00"	13.78"	1.18"	0.47"	0.98"	0.32"	8.51"
	Discharge	6"	6.71"	10.24"	12.00"	1.10"	0.24"	0.98"	0.28"	6.50"
	MID-PRESS (Eco.)	2 1/2"	3.05"	5.51"	6.89"	0.79"	0.31"	0.75"	0.20"	3.00"
Remarks		*Material- standard JIS 284.47 pounds per square inch steel unit: inches								



## Discharge Check Valve Size

To protect compressor from serious damage due to reverse rotation after emergency stop or shutdown, it is necessary to install the discharge check valve.

**Warning: Discharge check valve is mandatory**

Size	A(in)	B(in)	C(in)	D(in)
4"	2.52"	6.14"	4.41"	2.08"
6"	2.99"	8.38"	6.30"	3.03"
8"	3.50"	10.51"	8.27"	4.01"
10"	4.49"	12.91"	10.24"	4.21"
Remark	*The check valve is of wafer plate valve. Use ANSI 150 standard flange			

Check valve size

## MCC

Model	Voltage	(kW)	Primary Side		SECONDARY SIDE (Inverter to RTM)	
	(V)		Hertz	MCC(A)	Hertz	MCC(A)
RTM-070	460	220	50/60	322	250.0	430